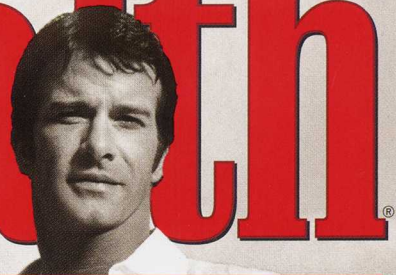


TONS OF  
USEFUL STUFF

# Men's Health



## She Is What She Drives

**START HER ENGINES** > Size up her personality and get better relationship mileage with these pointers from Mary Butler, senior editor for the online automotive marketplace cars.com.

**COMPACT CAR** The Civic chick values practicality and lives to be low-maintenance—you won't be dropping megabucks on a date.

**HYBRID/ELECTRIC CAR** That pretty woman in the Prius is generous and likes to help others. She's into the underdog and will be okay with any physical shortcomings.

**PICKUP TRUCK** An easygoing gal in an F-150 is looking for a guy who's as solid and dependable

as her ride. She hopes to pick up a real man's man who will take control in bed.

**SPORT-UTILITY VEHICLE** If she drives a compact SUV (like an Element), she's forward-thinking and adventurous. She'll want you to maintain a high energy level. The woman with the supersized SUV (say, an Expedition) has one message: "Move over, baby, because it's all about me!"

**STATUS CAR** Successful, aggressive, and confident, the lady in the Lexus seeks same. But underneath that diva exterior is a very warm interior.

**SUPERCAR** The blonde in the Ferrari is a limelight lover and a risk taker. A guy has to be attuned to whether she's firing on all pistons to make her engine roar.

**VINTAGE CAR** Her Detroit monster (think '71 Caddy) shows she needs her space and appreciates classic quality. She's traditional between the sheets and may take a while to warm up.

Nice  
headlights.

